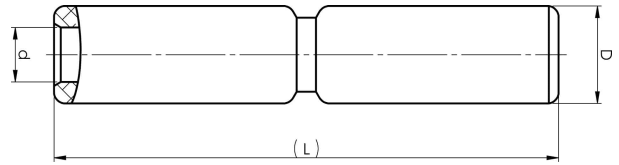


Aluminium through connectors with partition 16 -
1200 mm²

AS400SOLID



- Used primarily for splicing two Al conductors with the same area.
- Two plus two crimps are needed.
- With partition.

Al through connector with partition for solid Al cable
400 mm². Used with Elpress certified system V250.



Item number: **7313-445200**

EAN: **7393487041264**

d (mm): **23**

D (mm): **40**

L (mm): **179**

s (mm) - strip length: **83**

AWG/MCM Solid Al: **750**

mm² Solid Al: **400**