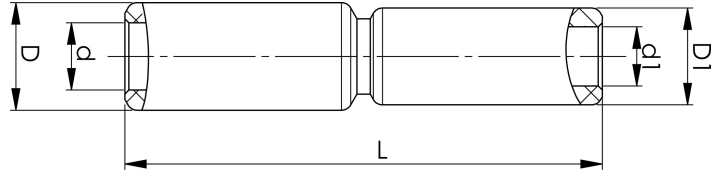


Through connectors with aluminium partitions with different areas 16 - 400 mm²

AS150-70

Al through connector with partition for stranded Al cable 150-70 mm², or for solid Al cable 185-95 mm².
Used for splicing Al conductors of different areas.
Used with Elpress certified systems V1300, V250.



: 7313-409100
: 7393487009257

: 45
: 15.8
: 25
: 116.1
: 11.3
: 20
: 60

: 30020
: 35030
: 150-70
: 185-95