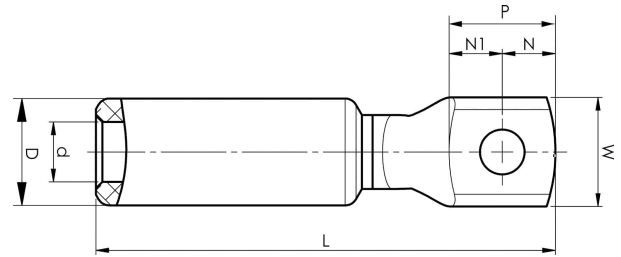


Aluminium-copper terminals 16 - 1200 mm²

AKK120-12

- Used for connection of Al conductors for apparatus outlets and busbars of Cu.
- Two crimps are needed.



AlCu terminal for stranded Al cable 120 mm², or for solid Al cable 150 mm², with an M12 hole in the palm. Used with Elpress certified systems V1300, V250.



Item number: **7331-402700**

EAN: **7393487009462**

W (mm): **25.5**

N (mm): **12.5**

N1 (mm): **12.5**

P (mm): **25**

d (mm): **14**

D (mm): **25**

L (mm): **108**

t (mm) - palm thickness: **5.7**

s (mm) - strip length: **60**

Screw: **M12**

AWG/MCM Stranded Al: **4/0 AWG**

AWG/MCM Solid Al: **300 MCM**

mm² Stranded Al: **120**

mm² Solid Al: **150**