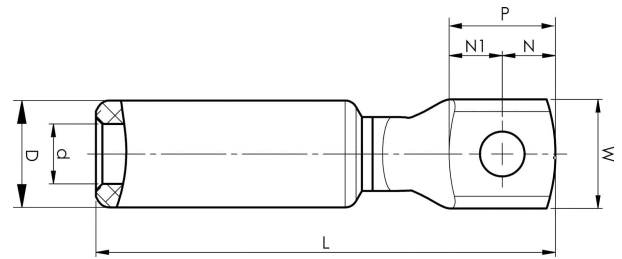


Aluminium-copper terminals 16 - 1200 mm²

AKK70-12

- Used for connection of Al conductors for apparatus outlets and busbars of Cu.
- Two crimps are needed.



AlCu terminal for stranded Al cable 70 mm², or for solid Al cable 95 mm², with an M12 hole in the palm.
Used with Elpress certified systems V1300, V250.



Item number: **7331-401900**
EAN: **7393487009400**

W (mm): **25**
N (mm): **12.5**
N1 (mm): **12.5**
P (mm): **25**
d (mm): **11.3**
D (mm): **20**
L (mm): **89**
t (mm) - palm thickness: **5.8**
s (mm) - strip length: **45**

Screw: **M12**

AWG/MCM Stranded Al: **2/0 AWG**
AWG/MCM Solid Al: **3/0 AWG**
mm² Stranded Al: **70**
mm² Solid Al: **95**