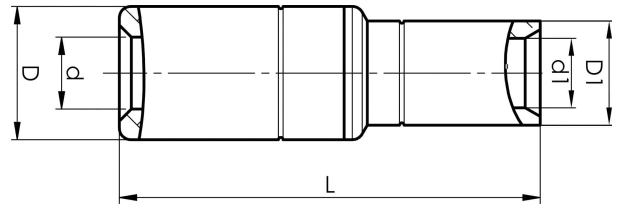


Aluminium-copper through connectors 16 - 500  
mm<sup>2</sup>

# AKS150-150



- Connector from Al conductor to Cu conductor.
- Stranded/solid Al conductors, stranded/multi-stranded Cu conductors.
- For multi-stranded Cu conductors, contact crimping using the Dual system is recommended.
- Two crimps are required for Al, normally one for Cu.

AlCu through connector, from Al conductor to Cu conductor. For stranded Al cable 150 mm<sup>2</sup>, or for solid Al cable 185 mm<sup>2</sup>, to stranded/multi-stranded Cu cable 150 mm<sup>2</sup>. When crimping the Cu section, place the dies between the mark on the sleeve and the edge of the Cu section. Used with Elpress certified systems V1300, V250.



Item number: **7333-402500**

EAN: **7393487009929**

s1 (mm): **35**

d (mm): **15.8**

D (mm): **25**

L (mm): **104**

d1 (mm): **19**

D1 (mm): **25**

s (mm) - strip length: **61**

AWG/MCM Stranded Al: **300 MCM**

AWG/MCM Solid Al: **350 MCM**

AWG/MCM Cu: **300 MCM**

mm<sup>2</sup> Stranded Al: **150**

mm<sup>2</sup> Solid Al: **185**

mm<sup>2</sup> Cu: **150**