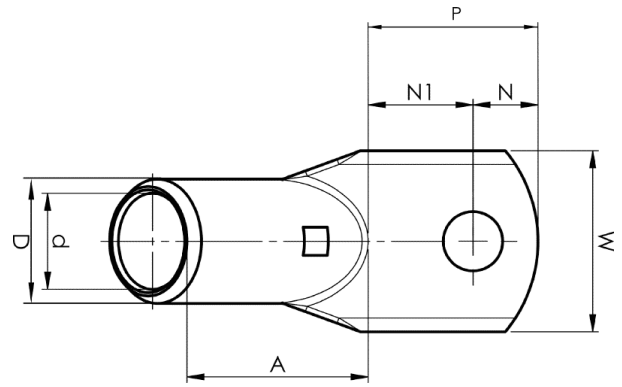


KRF angled terminals 45°

KRF240A-10- 45GR



Item number: **7301-143000**

EAN: **7393487044388**

A (mm): **57**

W (mm): **42**

N (mm): **11.5**

N1 (mm): **18.5**

P (mm): **30**

d (mm): **22.5**

D (mm): **29**

t (mm) - palm thickness: **6.3**

s (mm) - strip length: **37**

Screw: **M10**

Angle (°): **45**

Inspection hole: **Yes**

AWG/MCM Cu: **450 MCM**

mm² Cu: **240**