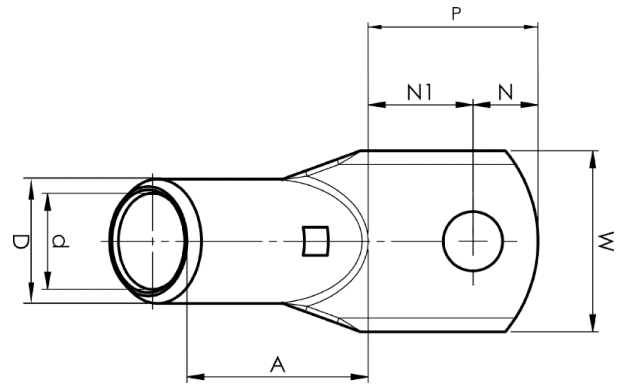


KRF angled terminals 45°

# KRF240A-12- 45GR



Item number: **7301-143100**

EAN: **7393487038301**

A (mm): **57**

W (mm): **42**

N (mm): **12.5**

N1 (mm): **19.5**

P (mm): **32**

d (mm): **22.5**

D (mm): **29**

t (mm) - palm thickness: **6.3**

s (mm) - strip length: **37**

Screw: **M12**

Angle (°): **45**

Inspection hole: **Yes**

AWG/MCM Cu: **450 MCM**

mm<sup>2</sup> Cu: **240**