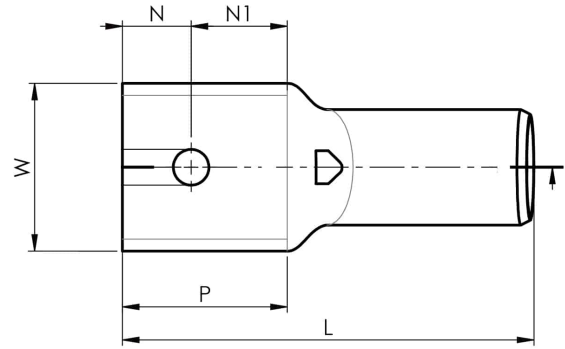


KRF tube terminals (NS)

# KRF630- 00NS



Item number: **7301-495900**

EAN: **7393487030459**

W (mm): **75**

P (mm): **80**

f (mm): **2**

d (mm): **39**

D (mm): **53**

L (mm): **195**

t (mm) - palm thickness: **13.8**

s (mm) - strip length: **80**

AWG/MCM Cu: **1250 MCM**

mm<sup>2</sup> Cu: **630**