

KS/KSF through connectors 0.75 - 800 mm²

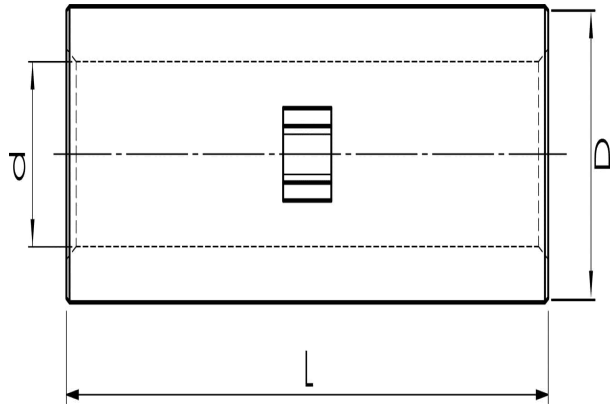
KSF630

- Material: Cu 99.95%, tin plated Cu/Sn.
- Inspection hole and int. cable stop.
- For stranded (class 2) and multi-stranded (class 5) Cu conductors, for multi-stranded Cu conductors contact crimping using the Dual system is recommended

Examples of marking: 20 95F (Elpress logotype is included on the marking.)

20 = Die No. 95 = mm² F = type KSF for stranded and flexible conductors 111 = screen mm²

Uninsulated through connector for multi-stranded (class 5) and stranded (class 2) Cu conductors, 630 mm². Used with Elpress certified systems V250, V1470.



Item number: **7303-231500**

EAN: **7393487011823**

d (mm): **39**

D (mm): **53**

L (mm): **175**

s (mm) - strip length: **88**

AWG/MCM Cu: **1250 MCM**

mm² Cu: **630**