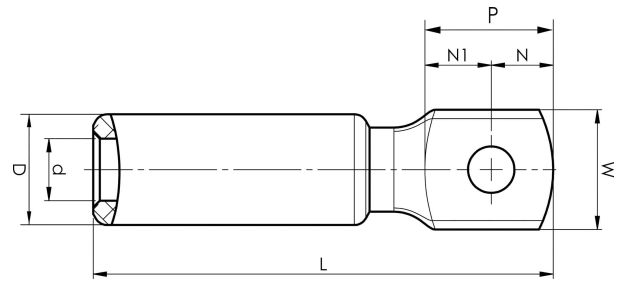


Aluminium terminals 16 - 1200 mm<sup>2</sup>

# AK185-16

- Used for connecting Al conductors to Al busbar.
- Two crimps are needed.



Al terminal for stranded Al cable 185 mm<sup>2</sup>, or for solid Al cable 240 mm<sup>2</sup> with an M16 hole in the palm. Used with Elpress certified systems V1300 or V250.



Item number: **7311-403600**

EAN: **7393487008892**

W (mm): **35**

N (mm): **16**

N1 (mm): **18.5**

P (mm): **34.5**

d (mm): **17.6**

D (mm): **32**

L (mm): **113**

t (mm) - palm thickness: **13**

s (mm) - strip length: **61**

Screw: **M16**

AWG/MCM Stranded Al: **350 MCM**

AWG/MCM Solid Al: **450 MCM**

mm<sup>2</sup> Stranded Al: **185**

mm<sup>2</sup> Solid Al: **240**