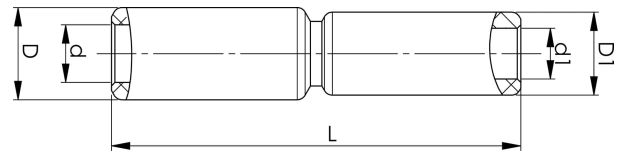


Through connectors with aluminium partitions with different areas 16 - 400 mm²

AS400-300

Al through connector with partition for stranded Al cable 400-300 mm². Used for splicing Al conductors of different areas. Used with Elpress certified system V250.



Item number: **7313-440600**

EAN: **7393487015937**

s1 (mm): **83**

d (mm): **25**

D (mm): **40**

L (mm): **179**

d1 (mm): **22**

D1 (mm): **36**

s (mm) - strip length: **83**

AWG/MCM Stranded Al: **550 - 700 MCM**

mm² Stranded Al: **400-300**