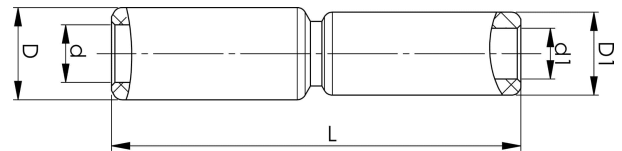


Through connectors with aluminium partitions with different areas 16 - 400 mm<sup>2</sup>

# AS70-50

Al through connector with partition for stranded Al cable 70-50 mm<sup>2</sup>, or for solid Al cable 95-70 mm<sup>2</sup>.  
Used for splicing Al conductors of different areas.  
Used with Elpress certified systems V1300, V250.



Item number: **7313-440200**

EAN: **7393487015289**

s1 (mm): **45**

d (mm): **11.3**

D (mm): **20**

L (mm): **100**

d1 (mm): **9.6**

D1 (mm): **20**

s (mm) - strip length: **45**

AWG/MCM Stranded Al: **1/0 - 2/0 AWG**

AWG/MCM Solid Al: **4020**

mm<sup>2</sup> Stranded Al: **70-50**

mm<sup>2</sup> Solid Al: **95-70**