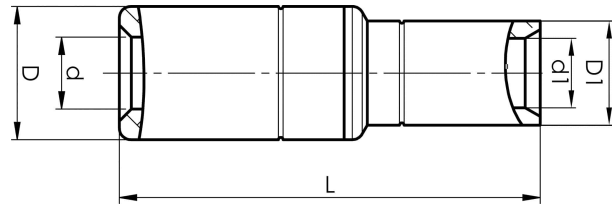


Aluminium-copper through connectors 16 - 500  
mm<sup>2</sup>

# AKS120-95



- Connector from Al conductor to Cu conductor.
- Stranded/solid Al conductors, stranded/multi-stranded Cu conductors.
- For multi-stranded Cu conductors, contact crimping using the Dual system is recommended.
- Two crimps are required for Al, normally one for Cu.

AlCu through connector, from Al conductor to Cu conductor. For stranded Al cable 120 mm<sup>2</sup>, or for solid Al cable 150 mm<sup>2</sup>, to stranded/multi-stranded Cu cable 95 mm<sup>2</sup>. When crimping the Cu section, place the dies between the mark on the sleeve and the edge of the Cu section. Used with Elpress certified systems V1300, V250.



Item number: **7333-401700**  
EAN: **7393487009844**

s1 (mm): **25**  
d (mm): **14**  
D (mm): **25**  
L (mm): **93.5**  
d1 (mm): **15**  
D1 (mm): **20**  
s (mm) - strip length: **61**

AWG/MCM Stranded Al: **250 MCM**  
AWG/MCM Solid Al: **300 MCM**  
AWG/MCM Cu: **4/0 AWG**  
mm<sup>2</sup> Stranded Al: **120**  
mm<sup>2</sup> Solid Al: **150**  
mm<sup>2</sup> Cu: **95**  
Screen conductor (mm<sup>2</sup>): **111**