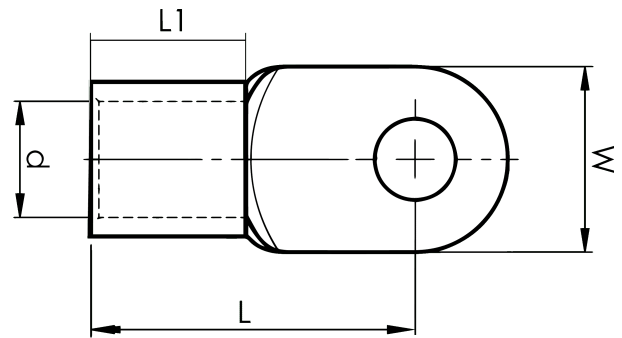


DIN 46234 sheet metal terminals 10 - 185 mm²

B120-12R

- dimensions according to DIN 46234
- material: 99.9% Cu, tin plated (Cu/Sn)



Sheet metal terminal for 120 mm² copper conductors with an M12 hole in the palm. Used with Elpress certified systems V600, V1300 or V250.



Item number: **7258-268900**

EAN: **7393487018792**

W (mm): **24**
d (mm): **16.5**
L1 (mm): **22**
L (mm): **44**

Screw: **M12**
Marking: **120**

AWG/MCM Cu: **4/0 AWG**
mm² Cu: **120**