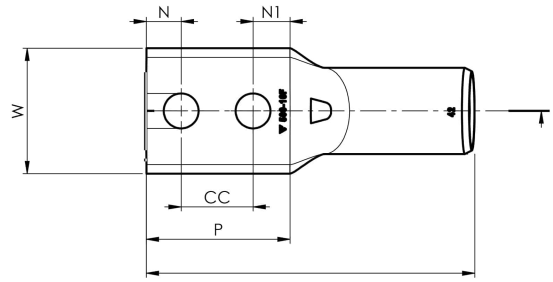


KRF tube terminals with two holes

KRF500- 12X2-45



Item number: **7301-483100**

EAN: **7393487090040**

W (mm): **61**

N (mm): **12**

N1 (mm): **18**

P (mm): **75**

cc (mm): **45**

d (mm): **33**

D (mm): **42**

L (mm): **165**

t (mm) - palm thickness: **9**

s (mm) - strip length: **70**

Screw: **M12x2**

Inspection hole: **Yes**

AWG/MCM Cu: **950 MCM**

mm² Cu: **500**