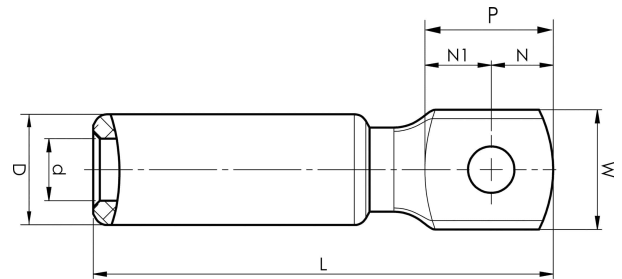


Aluminium terminals 16 - 1200 mm²

AK300-16

- Used for connecting Al conductors to Al busbar.
- Two crimps are needed.



Al terminal for stranded Al cable 300 mm² with an M16 hole in the palm. Used with Elpress certified system V250.



Item number: **7311-404200**

EAN: **7393487008922**

W (mm): **41**

N (mm): **18**

N1 (mm): **25**

P (mm): **43**

d (mm): **22**

D (mm): **36**

L (mm): **154**

t (mm) - palm thickness: **14**

s (mm) - strip length: **83**

Screw: **M16**

AWG/MCM Stranded Al: **550 MCM**

mm² Stranded Al: **300**