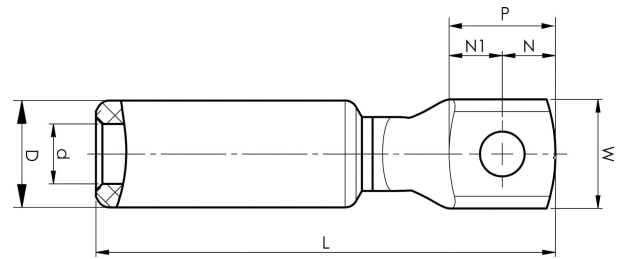


Aluminium-copper terminals 16 - 1200 mm<sup>2</sup>

# AKK25-8

- Used for connection of Al conductors for apparatus outlets and busbars of Cu.
- Two crimps are needed.



AlCu terminal for stranded Al cable 25 mm<sup>2</sup>, or for solid Al cable 35 mm<sup>2</sup>, with an M8 hole in the palm. Used with Elpress certified systems V1300, V250.



Item number: **7331-400700**

EAN: **7393487009325**

W (mm): **16**

N (mm): **8.5**

N1 (mm): **10**

P (mm): **18.5**

d (mm): **6.8**

D (mm): **13**

L (mm): **66**

t (mm) - palm thickness: **3**

s (mm) - strip length: **29**

Screw: **M8**

AWG/MCM Stranded Al: **4 AWG**

AWG/MCM Solid Al: **2 AWG**

mm<sup>2</sup> Stranded Al: **25**

mm<sup>2</sup> Solid Al: **35**