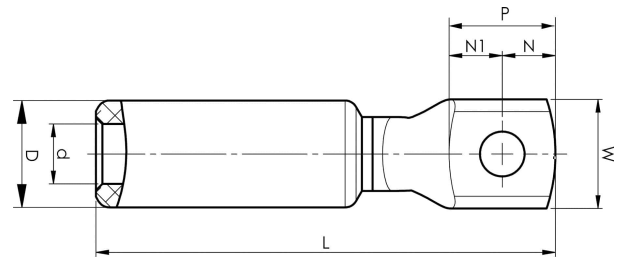


Aluminium-copper terminals 16 - 1200 mm²

AKK300- 20SOLID



- Used for connection of Al conductors for apparatus outlets and busbars of Cu.
- Two crimps are needed.

AlCu terminal for solid Al cable 300 mm², with an M20 hole in the palm. Used with Elpress certified system V250.



Item number: **7331-404600**

EAN: **7393487089860**

W (mm): **37**

N (mm): **18.5**

N1 (mm): **18.5**

P (mm): **37**

d (mm): **20**

D (mm): **36**

L (mm): **154**

t (mm) - palm thickness: **6.5**

s (mm) - strip length: **82**

Screw: **M20**

AWG/MCM Solid Al: **550 MCM**

mm² Solid Al: **300**