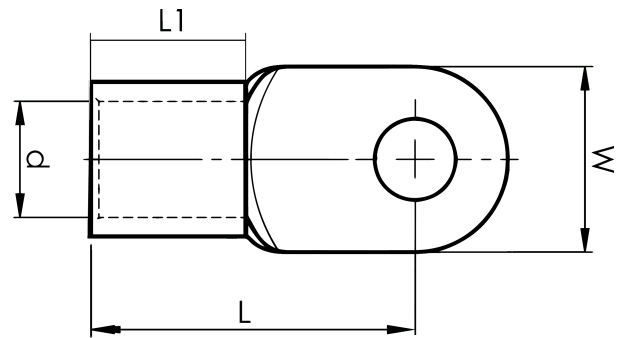


DIN 46234 sheet metal terminals 10 - 185 mm²

B10-12R

- dimensions according to DIN 46234
- material: 99.9% Cu, tin plated (Cu/Sn)



Sheet metal terminal for 10 mm² copper conductors with an M12 hole in the palm. Used with Elpress certified systems V600, V1300 or V250.



Item number: **7258-265900**
EAN: **7393487018495**

W (mm): **22**
d (mm): **4.5**
L1 (mm): **8**
L (mm): **23**
t (mm) - palm thickness: **1.1**

Screw: **M12**
Marking: **10**

AWG/MCM Cu: **8 AWG**
mm² Cu: **10**