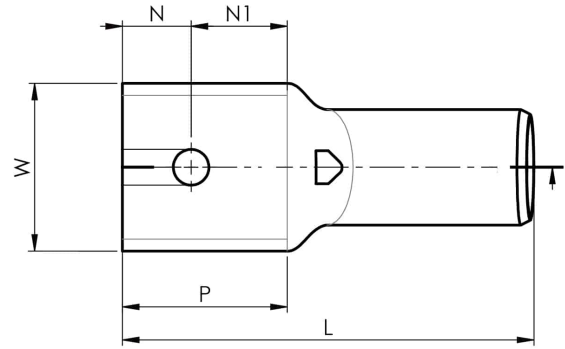


KRF500-00

- Material: Cu 99.95%, tin plated Cu/Sn.
- With inspection holes.
- For stranded (class 2) and multi-stranded (class 5) Cu conductors, for multi-stranded Cu conductors contact crimping using the Dual system is recommended.
- UL approved.



Example of marking KRF: 17 (neck) Elpress logotype 70 10F (palm)

17 = Die No. 70 = mm² 10 = palm hole for M10 F = type KRF for stranded and flexible conductors. Tube terminal for multi stranded (class 5) and stranded (class 2) Cu-conductors (acc. to IEC 60228), 500 mm², without a hole in the palm. Used with Elpress certified systems V250 or V1470.



Item number: **7301-230000**
EAN: **7393487006515**

W (mm): **61**
P (mm): **70**
f (mm): **2.5**
d (mm): **33**
D (mm): **42**
L (mm): **160**
t (mm) - palm thickness: **8.8**
s (mm) - strip length: **70**

Inspection hole: **Yes**

AWG/MCM Cu: **950 MCM**
mm² Cu: **500**