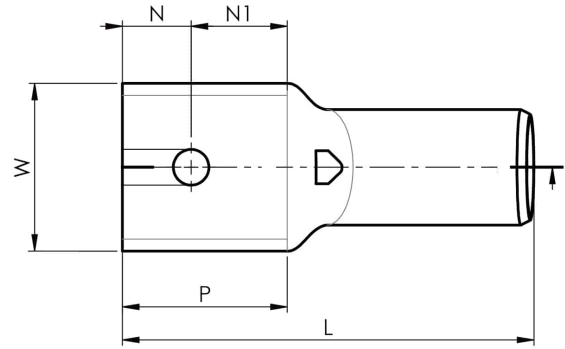


KRF tube terminals 16 - 800 mm²

KRF500-12



**UK
CA**



Item number: **7301-473200**

EAN: **7393487076532**

W (mm): **61**

N (mm): **25**

N1 (mm): **35**

P (mm): **60**

f (mm): **2.5**

d (mm): **33**

D (mm): **42**

L (mm): **150**

t (mm) - palm thickness: **8.8**

s (mm) - strip length: **70**

Screw: **M12**

Inspection hole: **Yes**

AWG/MCM Cu: **950 MCM**

mm² Cu: **500**