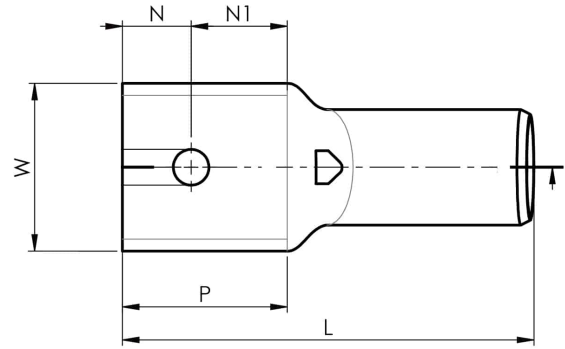


KRF500-24

- Material: Cu 99.95%, tin plated Cu/Sn.
- With inspection holes.
- For stranded (class 2) and multi-stranded (class 5) Cu conductors, for multi-stranded Cu conductors contact crimping using the Dual system is recommended.
- UL approved.



Example of marking KRF: 17 (neck) Elpress logotype 70 10F (palm)

17 = Die No. 70 = mm² 10 = palm hole for M10 F =
type KRF for stranded and flexible conductors.
Tube terminal for multi stranded (class 5) and
stranded (class 2) Cu-conductors (acc. to IEC
60228), 500 mm², with an M24 hole in the palm.
Used with Elpress certified systems V250 or V1470.



**UK
CA**

Item number: **7301-230300**

EAN: **7393487089716**

W (mm): **61**

N (mm): **25**

N1 (mm): **35**

P (mm): **60**

f (mm): **2.5**

d (mm): **33**

D (mm): **42**

L (mm): **150**

t (mm) - palm thickness: **8.8**

s (mm) - strip length: **70**

Screw: **M24**

Inspection hole: **Yes**

AWG/MCM Cu: **950 MCM**

mm² Cu: **500**