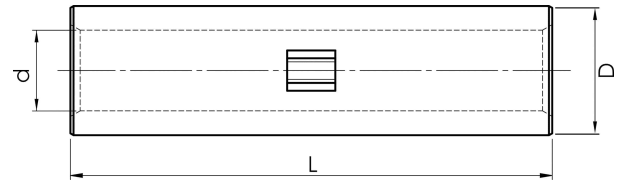


Joining sleeves 0.75 - 10 mm², KS/KSF through connectors 0.75 - 800 mm²

KS2,5



- Material: Cu 99.95%, tin plated Cu/Sn.
- Inspection hole and int. cable stop.
- For stranded (class 2) and multi-stranded (class 5) Cu conductors, for multi-stranded Cu conductors contact crimping using the Dual system is recommended.

Uninsulated through connector for multi-stranded (class 5) and stranded (class 2) Cu conductors, 2.5 mm². Used with certified tool DKB0325 or DKB0760.



Item number: **7303-000400**

EAN: **7393487007857**

d (mm): **2.3**

D (mm): **4,2**

L (mm): **16**

s (mm) - strip length: **8**

AWG/MCM Cu: **16 - 14 AWG**

mm² Cu: **2,5**