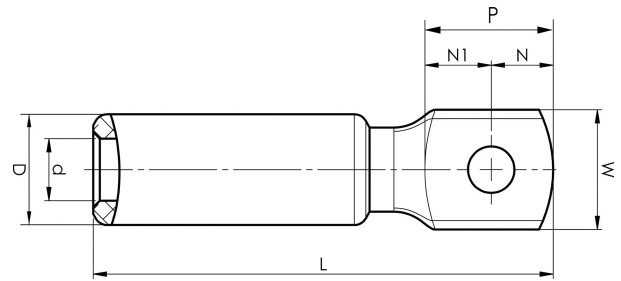


Aluminium terminals 16 - 1200 mm²

AK150-16

- Used for connecting Al conductors to Al busbar.
- Two crimps are needed.



Al terminal for stranded Al cable 150 mm², or for solid Al cable 185 mm² with an M16 hole in the palm. Used with Elpress certified systems V1300 or V250.



Item number: **7311-403200**

EAN: **7393487008861**

W (mm): **35**

N (mm): **21**

N1 (mm): **23**

P (mm): **44**

d (mm): **15.8**

D (mm): **25**

L (mm): **119**

t (mm) - palm thickness: **8**

s (mm) - strip length: **60**

Screw: **M16**

AWG/MCM Stranded Al: **300 MCM**

AWG/MCM Solid Al: **350 MCM**

mm² Stranded Al: **150**

mm² Solid Al: **185**