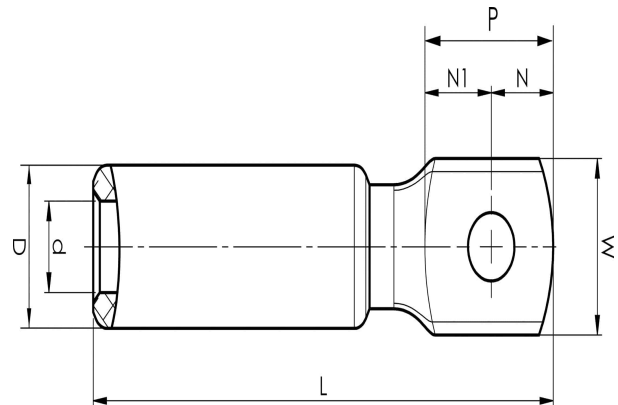


Aluminium terminals 16 - 1200 mm<sup>2</sup>

# AK50-10

- Used for connecting Al conductors to Al busbar.
- Two crimps are needed.

Al terminal for stranded Al cable 50 mm<sup>2</sup>, or for solid Al cable 70 mm<sup>2</sup> with an M10 hole in the palm. Used with Elpress certified systems V1300 or V250.



Item number: **7311-401400**  
EAN: **7393487008779**

W (mm): **22**  
N (mm): **11**  
N1 (mm): **14**  
P (mm): **25**  
d (mm): **9.6**  
D (mm): **20**  
L (mm): **85**  
t (mm) - palm thickness: **7.5**  
s (mm) - strip length: **45**

Screw: **M10**

AWG/MCM Stranded Al: **1/0 AWG**  
AWG/MCM Solid Al: **2/0 AWG**  
mm<sup>2</sup> Stranded Al: **50**  
mm<sup>2</sup> Solid Al: **70**