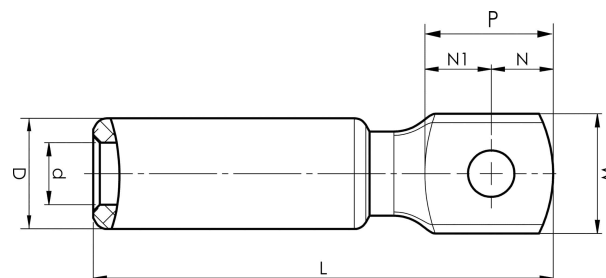


Aluminium terminals 16 - 1200 mm<sup>2</sup>

# AK500B-20

- Used for connecting Al conductors to Al busbar.
- Two crimps are needed.



Al terminal for stranded, Al cable 500 mm<sup>2</sup> with an M20 hole in the palm. Used with Elpress certified system V250.



Item number: **7311-406600**

EAN: **7393487022355**

W (mm): **44**

N (mm): **22**

N1 (mm): **22**

P (mm): **44**

d (mm): **28**

D (mm): **44**

L (mm): **174**

t (mm) - palm thickness: **16**

s (mm) - strip length: **83**

Screw: **M20**

AWG/MCM Stranded Al: **950 MCM**

mm<sup>2</sup> Stranded Al: **500**