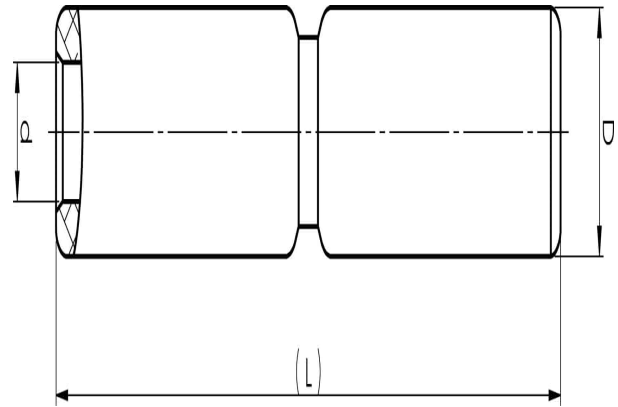


Aluminium through connectors with partition 16 -  
1200 mm<sup>2</sup>

# AS300

- Used primarily for splicing two Al conductors with the same area.
- Two plus two crimps are needed.
- With partition.

Al joint sleeve with partition for stranded Al cable  
300 mm<sup>2</sup>. Used with Elpress certified system V250.



Item number: **7313-401200**

EAN: **7393487009134**

d (mm): **22**

D (mm): **36**

L (mm): **177**

s (mm) - strip length: **83**

AWG/MCM Stranded Al: **550 MCM**

mm<sup>2</sup> Stranded Al: **300**