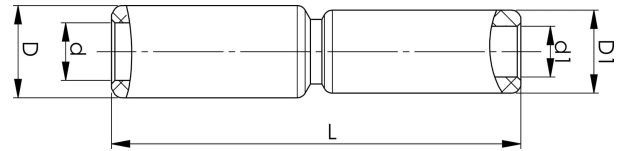


Through connectors with aluminium partitions with different areas 16 - 400 mm²

AS25-16

Al through connector with partition for stranded Al cable 25-16 mm², or for solid Al cable 35-25 mm².
Used for splicing Al conductors of different areas.
Used with Elpress certified systems V1300, V250.



Item number: **7313-441400**

EAN: **7393487019799**

s1 (mm): **29**

d (mm): **6.8**

D (mm): **13**

L (mm): **67**

d1 (mm): **5.9**

D1 (mm): **13**

s (mm) - strip length: **29**

AWG/MCM Stranded Al: **4 - 6 AWG**

AWG/MCM Solid Al: **24**

mm² Stranded Al: **25-16**

mm² Solid Al: **35-25**