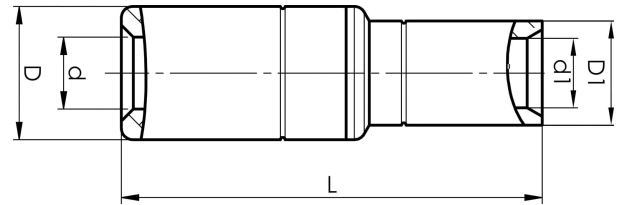


Aluminium-copper through connectors 16 - 500  
mm<sup>2</sup>

# AKS240-50



- Connector from Al conductor to Cu conductor.
- Stranded/solid Al conductors, stranded/multi-stranded Cu conductors.
- For multi-stranded Cu conductors, contact crimping using the Dual system is recommended.
- Two crimps are required for Al, normally one for Cu.

AlCu through connector, from Al conductor to Cu conductor. For stranded Al cable 240 mm<sup>2</sup> to stranded/multi-stranded Cu cable 50 mm<sup>2</sup>. When crimping the Cu section, place the dies between the mark on the sleeve and the edge of the Cu section. Used with Elpress certified systems V1300, V250.



Item number: **7333-405300**

EAN: **7393487010192**

s1 (mm): **23**

d (mm): **19.8**

D (mm): **32**

L (mm): **91**

d1 (mm): **11**

D1 (mm): **14.5**

s (mm) - strip length: **61**

AWG/MCM Stranded Al: **450 MCM**

AWG/MCM Cu: **1/0 AWG**

mm<sup>2</sup> Stranded Al: **240**

mm<sup>2</sup> Cu: **50**

Screen conductor (mm<sup>2</sup>): **57**