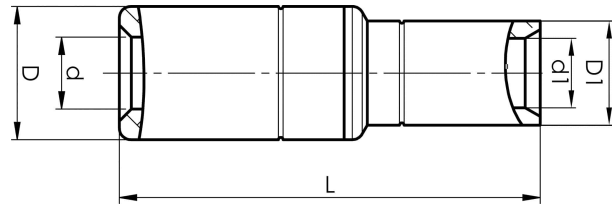


Aluminium-copper through connectors 16 - 500  
mm<sup>2</sup>

# AKS25-10



- Connector from Al conductor to Cu conductor.
- Stranded/solid Al conductors, stranded/multi-stranded Cu conductors.
- For multi-stranded Cu conductors, contact crimping using the Dual system is recommended.
- Two crimps are required for Al, normally one for Cu.

AlCu through connector, from Al conductor to Cu conductor. For stranded Al cable 25 mm<sup>2</sup>, or for solid Al cable 35 mm<sup>2</sup>, to stranded/multi-stranded Cu cable 10 mm<sup>2</sup>. When crimping the Cu section, place the dies between the mark on the sleeve and the edge of the Cu section. Used with Epress certified systems V1300, V250.



Item number: **7333-443200**

EAN: **7393487020511**

s1 (mm): **14**

d (mm): **6.8**

D (mm): **13**

L (mm): **45.5**

d1 (mm): **5**

D1 (mm): **8**

s (mm) - strip length: **29**

AWG/MCM Stranded Al: **4 AWG**

AWG/MCM Solid Al: **2 AWG**

AWG/MCM Cu: **8 AWG**

mm<sup>2</sup> Stranded Al: **25**

mm<sup>2</sup> Solid Al: **35**

mm<sup>2</sup> Cu: **10**