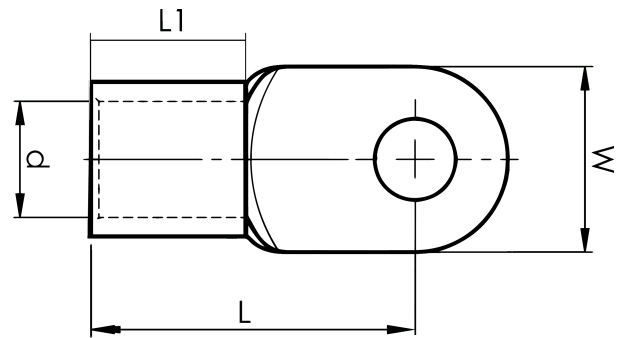


DIN 46234 sheet metal terminals 10 - 185 mm<sup>2</sup>

# B120-12R

- dimensions according to DIN 46234
- material: 99.9% Cu, tin plated (Cu/Sn)



Sheet metal terminal for 120 mm<sup>2</sup> copper conductors with an M12 hole in the palm. Used with Elpress certified systems V600, V1300 or V250.



Item number: **7258-268900**

EAN: **7393487018792**

W (mm): **24**  
d (mm): **16.5**  
L1 (mm): **22**  
L (mm): **44**

Screw: **M12**  
Marking: **120**

AWG/MCM Cu: **4/0 AWG**  
mm<sup>2</sup> Cu: **120**