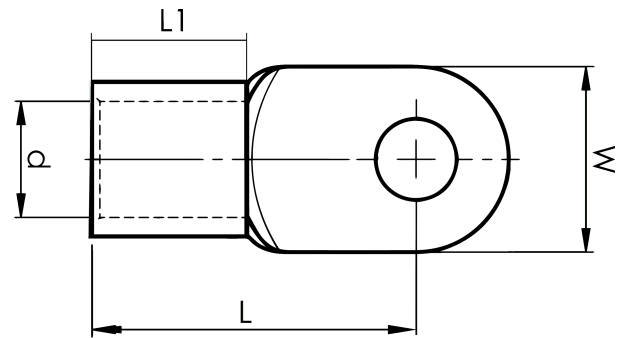


DIN 46234 sheet metal terminals 10 - 185 mm<sup>2</sup>

# B25-12R

- dimensions according to DIN 46234
- material: 99.9% Cu, tin plated (Cu/Sn)



Sheet metal terminal for 25 mm<sup>2</sup> copper conductors with an M12 hole in the palm. Used with Elpress certified systems V600, V1300 or V250.



Item number: **7258-266900**

EAN: **7393487018594**

W (mm): **22**

d (mm): **7.5**

L1 (mm): **11**

L (mm): **31**

t (mm) - palm thickness: **1.5**

Screw: **M12**

Marking: **25**

AWG/MCM Cu: **4 AWG**

mm<sup>2</sup> Cu: **25**