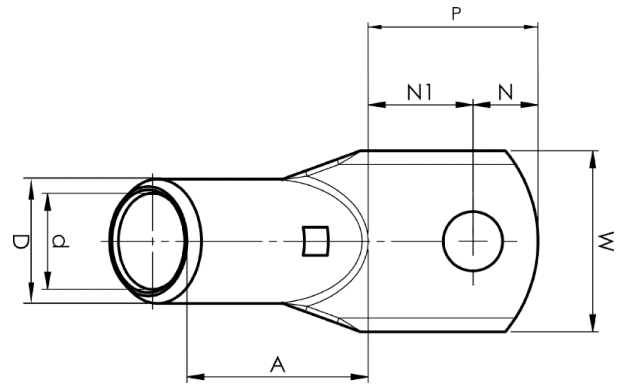


KRF angled terminals 45°

# KRF185-10- 45GR



Item number: **7301-508800**

EAN: **7393487041325**

A (mm): **55**

W (mm): **39**

N (mm): **11.5**

N1 (mm): **18.5**

P (mm): **30**

d (mm): **21**

D (mm): **27**

t (mm) - palm thickness: **5.8**

s (mm) - strip length: **37**

Screw: **M10**

Angle (°): **45**

Inspection hole: **Yes**

AWG/MCM Cu: **350 MCM**

mm<sup>2</sup> Cu: **185**