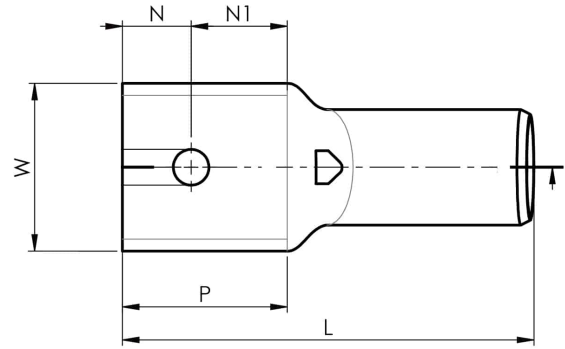


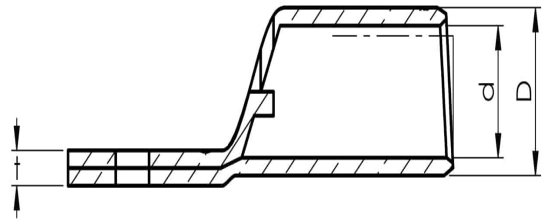
KRF630-24

- Material: Cu 99.95%, tin plated Cu/Sn.
- With inspection holes.
- For stranded (class 2) and multi-stranded (class 5) Cu conductors, for multi-stranded Cu conductors contact crimping using the Dual system is recommended.



Example of marking KRF: 17 (neck) Elpress logotype 70 10F (palm)

17 = Die No. 70 = mm² 10 = palm hole for M10 F =
type KRF for stranded and flexible conductors.
Tube terminal for multi stranded (class 5) and
stranded (class 2) Cu-conductors (acc. to IEC
60228), 630 mm², with an M24 hole in the palm.
Used with Elpress certified systems V250 or V1470.



Item number: **7301-232500**

EAN: **7393487089723**

W (mm): **75**

N (mm): **35**

N1 (mm): **45**

P (mm): **80**

f (mm): **2**

d (mm): **39**

D (mm): **53**

L (mm): **195**

t (mm) - palm thickness: **13.8**

s (mm) - strip length: **80**

Screw: **M24**

Inspection hole: **Yes**

AWG/MCM Cu: **1250 MCM**

mm² Cu: **630**