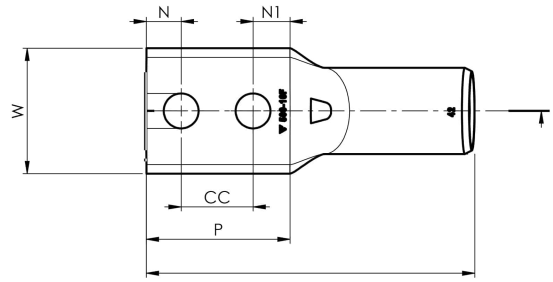


KRF tube terminals with two holes

KRF500- 12X2-40



Item number: **7301-458800**

EAN: **7393487076501**

W (mm): **61**

N (mm): **15**

N1 (mm): **15**

P (mm): **70**

cc (mm): **40**

d (mm): **33**

D (mm): **42**

L (mm): **160**

t (mm) - palm thickness: **8.8**

s (mm) - strip length: **49**

Screw: **M12x2**

Inspection hole: **Yes**

AWG/MCM Cu: **950 MCM**

mm² Cu: **500**

