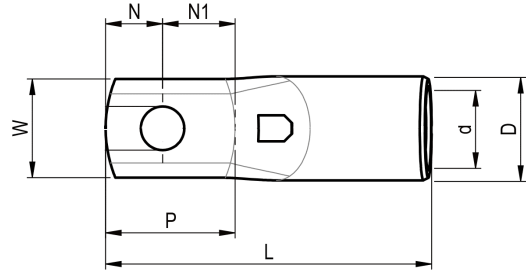


KRFS tube terminals 50 - 400 mm<sup>2</sup> with narrow palm

# KRFS150-8



- Material: Cu 99.95%, tin plated Cu/Sn.
- Inspection hole
- For stranded (class 2) and multi-stranded (class 5) Cu conductors, for multi-stranded Cu conductors contact crimping using the Dual system is recommended.
- Easy to install via cable gland, allows for pre-installation.
- The width of the palm is less than or as wide as the neck.

## Example of marking KRFS: 17 (neck) Elpress logotype 70 10F (palm)

17 = Die no. 70 = mm<sup>2</sup> 10 = palm hole for M10 F = type KRF for stranded and flexible conductors. Tube terminal with narrow palm for multi-stranded (class 5) and stranded (class 2) Cu conductors (acc. to IEC 60228), 150 mm<sup>2</sup>, with an M8 hole in the palm. Used with Elpress certified systems V600, V1300, V250.



Item number: **7301-291700**  
EAN: **7393487062085**

W (mm): **25**  
N (mm): **11**  
N1 (mm): **14**  
P (mm): **25**  
f (mm): **1**  
d (mm): **19**  
D (mm): **25**  
L (mm): **74**  
t (mm) - palm thickness: **6.3**  
s (mm) - strip length: **32**

Screw: **M8**  
Inspection hole: **Yes**

AWG/MCM Cu: **300 MCM**  
mm<sup>2</sup> Cu: **150**

**ELPRESS**